

HEDDLU DYFED-POWYS POLICE LLWYNHENDY STATION

ANNUAL
REPORT



ADRODDIAD
BLYNYDDOL

1994



Cefncaeau Community Centre



The National Award
for Quality of Service

Y Wobr Brydeinig am
Answdd Gwasanaeth

FOREWORD BY SUPERINTENDENT W. DAVIES

1994 saw an effective change in the Llanelli Police Divisional Strategy to tackle crime. A Crime Management team was set up, and members were given specific responsibilities to identify crime patterns which would assist in preventing and reducing crime and consequently enhance overall detection rates.

I am therefore pleased to report that as a result of increased public awareness, close inter agency working relationships, public co-operation and indeed a determined effort by my staff, crime in the Llanelli Division in 1994 decreased by 15% and the detection rate was increased by 11% in comparison with 1993.

4523 criminal offences were committed with 2422 being detected, giving an overall detection rate of 53%. This compares favourably with 1993 where there were 5349 reported offences, 2262 of which were detected resulting in a detection rate of 42%.

We police with the consent and co-operation of the public, and the successes of this year would never have been attained without your support for which I am indebted and appreciative.

It has always been my policy to encourage community involvement, and the enthusiasm of Home Watch groups, Special Constables, and Police Volunteers, are a fine example of the community spirit which exists within the Division.

My policing plan for 1995 involves National, Force, and local objectives.

A) NATIONAL OBJECTIVES IDENTIFIED BY THE HOME SECRETARY EXPRESSING HIS PRIORITIES ACROSS ENGLAND AND WALES.

- (i) Maintain the number of crime detections per 100 officers at 243 offences or reduce the number of violent crimes.
- (ii) To increase the detections per 100 police officers from 65 to 70 or reduce the number of burglary offences committed.
- (iii) To target and prevent crimes which are a particular local problem, including drug related criminality in partnership with the public and local agencies.

B) FORCE OBJECTIVES

- (i) To maintain the current high level of public service.
- (ii) To make every effort to contain or if possible further reduce crime.

The Llanelli East Section is staffed by 2 uniform Sergeants, 8 uniform Constables, 1 Detective Sergeant and 1 Detective Constable, ably assisted by Special Constables and several recently recruited Police Volunteers. Our volunteers perform a supportive role, manning police stations at specific times, thereby allowing regular officers to spend more time on the beat.

During the last 12 months continued efforts have been made to contain the growth in crime and to become involved in community activities.

Crime has dropped marginally and I am pleased to report, the detection rate has risen markedly to over 51% compared to 35% for 1993, which is well above the national average.

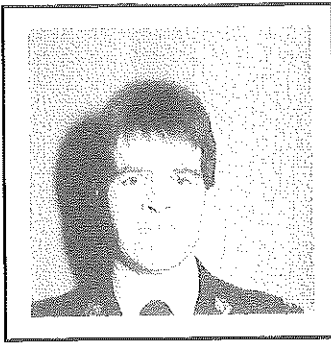
Community involvement outside of 'work' includes Pc Anuerin Evans devoting all his spare time to the development of the new Cefncaeau Community Centre which opened in July 1994. Pc Evans has been a driving force behind a commitment to the youth of Llwynhendy resulting in a significant drop in crime and disorderly behaviour in the area.

Pc Evans also qualified as a youth worker attending a nationally recognised course, his efforts have been rewarded with the High Sherrif of Dyfeds Shrievalty Cup being presented to him.



Pc Aneurin Evans

GET TO KNOW YOUR LOCAL OFFICER



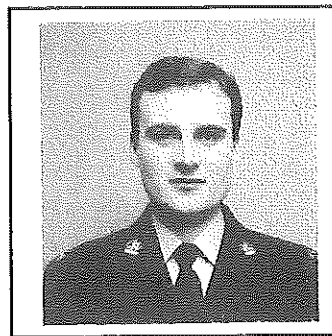
Sergeant Paul Marshall
Supervisor



Sergeant Kevin Gandy
Supervisor



Constable Malcolm Thompson
L.B.O. Llangennech
Schools Liaison Officer Bryn C.P.



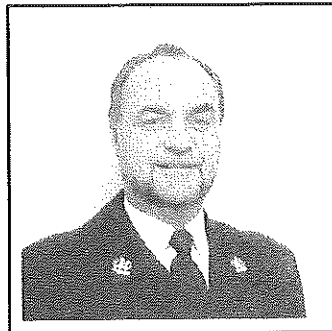
Constable Andrew John
L.B.O. Hendy/Llanedi
Schools Liaison Officer Llanedi



Constable Paul Williams
L.B.O. Llwynhendy
School Liaison Officer Brynsierfel



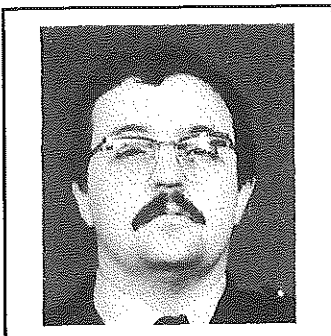
Constable Lucienne Bennett
L.B.O. Llwynhendy
Schools Liaison Officer Llwynhendy C.P.



Constable Aneurin Evans
L.B.O. Llwynhendy
Schools Liaison Officer Ysgol yr Yrns



Constable Ian Ruck
L.B.O. Bynea
Schools Liaison Officer Bynea C.P.



Constable John James
L.B.O. Hendy
Schools Liaison Officer Hendy C.P.



Constable Clive Jones
L.B.O. Llwynhendy, Llangennech
Schools Liaison Officer Llangennech
C.P.

Annual Crime Statistics - 1994

	Llwynhendy/Bynea		Llangennech		Hendy/Llanedi	
	R*	D*	R	D	R	D
Burglary	64	24	23	13	18	9
Assaults	54	51	19	19	7	5
Criminal Damage	81	44	33	18	31	6
Theft	107	44	33	19	27	10
Deception	11	11	4	4	0	0
*T.W.O.C.	30	14	7	3	20	3
*TUMV	36	6	10	4	18	4
Affray	10	10	2	1	1	1
Handling	9	9	2	2	1	1
Arson	2	0	0	0	2	0
Threats to kill	2	2	0	0	0	0
	406	215	133	83	125	39
	52.9%		62.4%		31.2%	

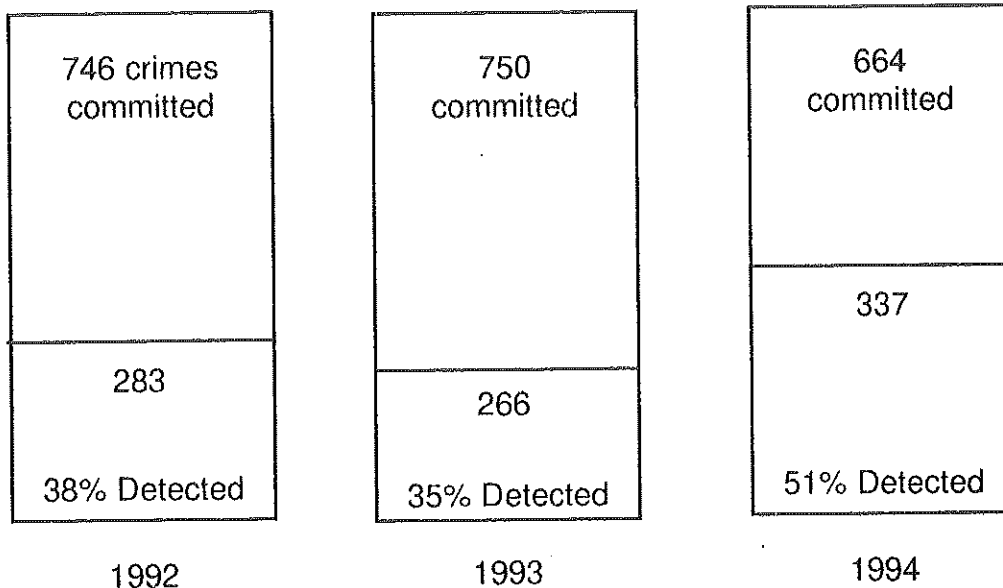
T.W.O.C. - Vehicles taken without owners consent
T. U.M.V. - Theft from unattended motor vehicle

R - Reported
D - Detected

Pc Ian Ruck a member of the Anthony Nolan trust donated his bone marrow in the life saving mission of a 4 year old leukemia sufferer. Ps Paul Marshall walked 40 miles across the Brecon Beacon, local people donating most generously to a worthy charity Children in Need (Wales) and DC Jeff Piller covered 127 miles in a Mammouth sponsored walk for charity, all providing an indication of how committed these officers are, to community involvement.



Annual Crime Trends



Burglary

105 burglary offences were committed in 1994, of which 43% were detected. This compares with 169 reported burglaries in 1993 of which 23% were detected. Detection rate has therefore increased by 10% and the incidence this type of crime reduced by 26%.

Offences Against the Person

There were 80 reported assaults against the person of which 75 were detected. This represents a detection rate of 94%. In the majority of cases the offender and the injured party are known to each other. The vulnerable group for this type of offence are young males between 15-25 and not the elderly

Drugs

Nine drugs search warrants were executed in 1994, and 28 persons were arrested for drugs related matters

Burglary

Home watch

There are 24 Home Watch Schemes in the area. The Constable with responsibility for a specific area is responsible for keeping contact with the co-ordinator of each scheme. This is an increase of 10 Homewatch schemes on the previous year and a clear indication of the commitment of the public to reducing crime in their respective areas. If you want more information on the concept please speak to your local officer who will be happy to assist you.

Schools

There are 8 primary schools in the area each of which has a dedicated schools liaison officer.



Pc. Ian Ruck and 'Bobby' the car at Bynea C.P. School.

Volunteers

We have this year recruited 6 volunteers who are prepared to sacrifice their spare time to man the phones at our police station giving us the chance to spend more time on the 'Beat'.

**Llwynhendy
Police Station
01554 778220**

**Llanelli
Police Station
01554 772222**

**Headquarters
Carmarthen
01267 236444**

